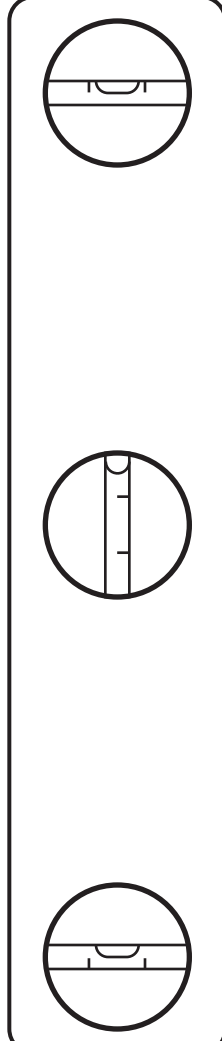
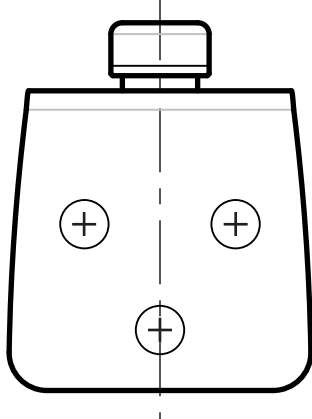


# Top



**Consult User Guide to determine optimal placement of receiver**

### Instructions

1. Tape top of template to wall
2. Use level to properly align template
3. Tape bottom of template to wall

**Note: template must be flat against wall!**

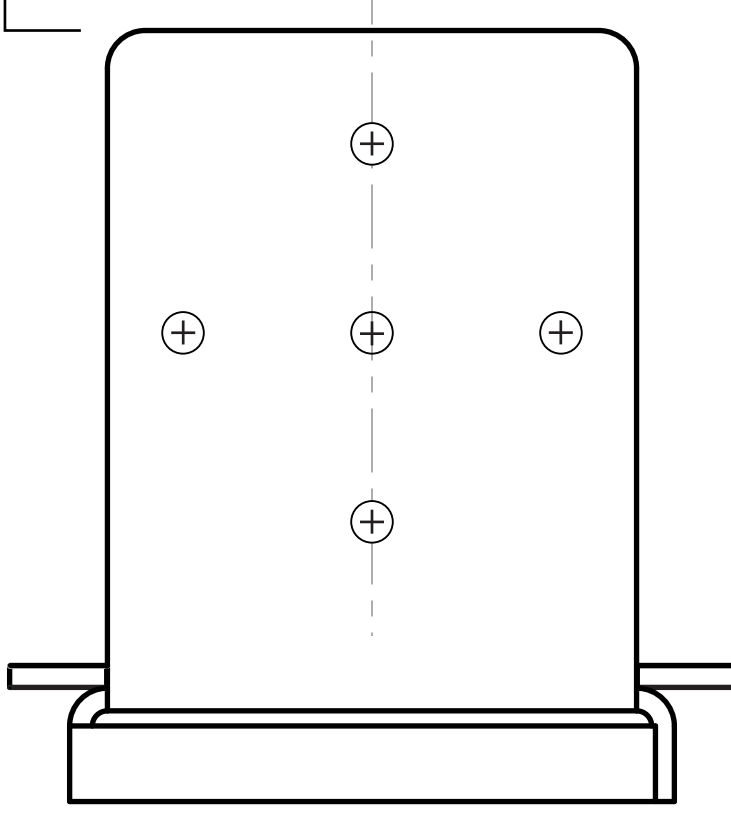
### If mounting to drywall:

1. Drill holes for top and bottom mounting bracket using XX in./XX mm drill bit
2. Remove template
3. Insert drywall anchors into holes
4. Attach mounting brackets using screws

### If mounting to wood wall reinforcement (stud):

1. Drill pilot holes for top mounting bracket using XX in./XX mm drill bit
2. Drill pilot holes for three vertical holes on bottom mounting bracket using XX in./XX mm drill bit
3. Remove template
4. Attach mounting brackets using screws

61 cm / 24" (inches)



# Bottom